



Performance Report for: <https://mrbarati.com/>

Report generated: Thu, Jan 4, 2024 2:48 AM -0800
 Test Server Location: London, UK
 Using: Chrome 117.0.0.0, Lighthouse 11.0.0
 Connection: Broadband (5/1 Mbps, 30ms)

A	Performance	Structure	L. Contentful Paint	T. Blocking Time	C. Layout Shift
	97%	100%	1.1s	0ms	0

Top Issues

IMPACT	AUDIT	
Low	Serve static assets with an efficient cache policy	Potential savings of 35.2KB
Low	Avoid chaining critical requests <small>FCP LCP</small>	29 chains found
Low	Avoid an excessive DOM size <small>TBT</small>	436 elements
Low	Avoid enormous network payloads <small>LCP</small>	Total size was 673KB
Low	Properly size images	Potential savings of 121KB

Page Details



Total Page Size - 672KB



Total Page Requests - 42



HTML JS CSS IMG Video Font Other

How does this affect me?

Today's web user expects a fast and seamless website experience. Delivering that fast experience can result in increased visits, conversions and overall happiness.

As if you didn't need more incentive, **Google has announced that they are using page speed in their ranking algorithm.**

About GTmetrix

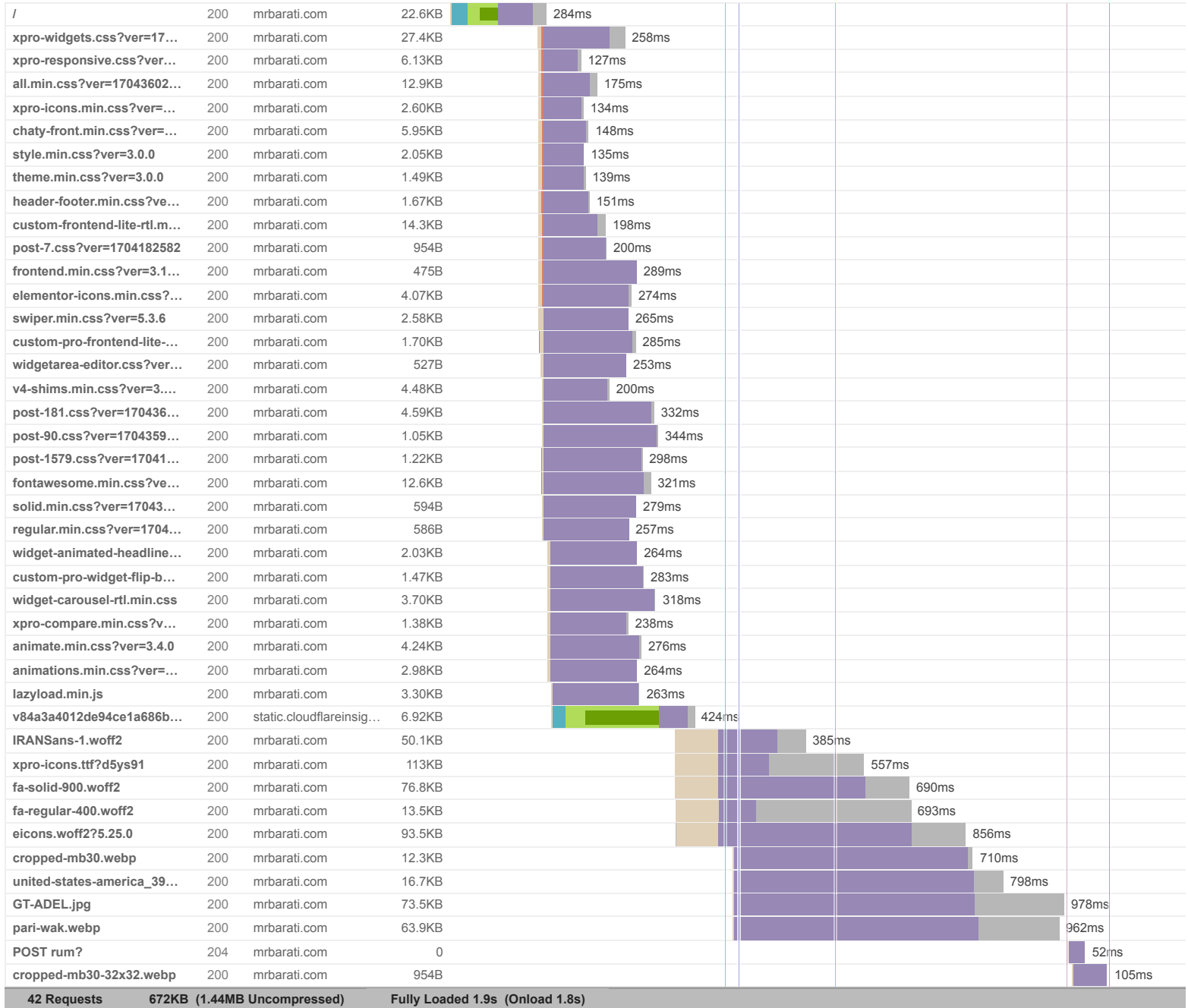
CARBON60
THE MANAGED CLOUD COMPANY

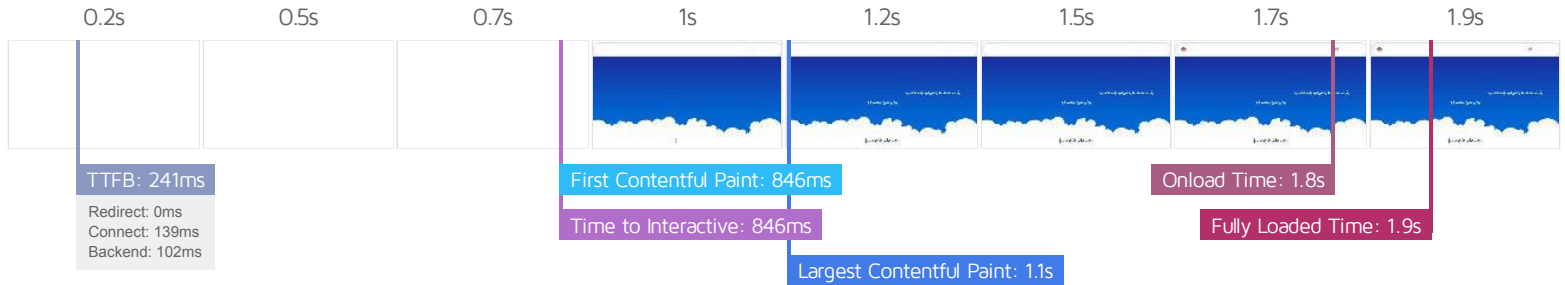
GTmetrix is developed by the good folks at Carbon60, a Canadian hosting company with over 28 years experience in web technology.

<https://carbon60.com/>

The waterfall chart displays the loading behaviour of your site in your selected browser. It can be used to discover simple issues such as 404's or more complex issues such as external resources blocking page rendering.

محمد براتی طراح سایت - 2024





Performance Metrics

<p>First Contentful Paint</p> <p>How quickly content like text or images are painted onto your page. A good user experience is 0.9s or less.</p>	<p>Good - Nothing to do here</p> <p>846ms</p>	<p>Time to Interactive</p> <p>How long it takes for your page to become fully interactive. A good user experience is 2.5s or less.</p>	<p>Good - Nothing to do here</p> <p>846ms</p>
<p>Speed Index</p> <p>How quickly the contents of your page are visibly populated. A good user experience is 1.3s or less.</p>	<p>Good - Nothing to do here</p> <p>859ms</p>	<p>Total Blocking Time</p> <p>How much time is blocked by scripts during your page loading process. A good user experience is 150ms or less.</p>	<p>Good - Nothing to do here</p> <p>0ms</p>
<p>Largest Contentful Paint</p> <p>How long it takes for the largest element of content (e.g. a hero image) to be painted on your page. A good user experience is 1.2s or less.</p>	<p>Good - Nothing to do here</p> <p>1.1s</p>	<p>Cumulative Layout Shift</p> <p>How much your page's layout shifts as it loads. A good user experience is a score of 0.1 or less.</p>	<p>Good - Nothing to do here</p> <p>0</p>

Browser Timings

Redirect	0ms	Connect	139ms	Backend	102ms
TTFB	241ms	DOM Int.	799ms	DOM Loaded	806ms
First Paint	846ms	Onload	1.8s	Fully Loaded	1.9s

IMPACT	AUDIT	
Low	Serve static assets with an efficient cache policy	Potential savings of 35.2KB
Low	Avoid chaining critical requests FCP LCP	29 chains found
Low	Avoid an excessive DOM size TBT	436 elements
Low	Avoid enormous network payloads LCP	Total size was 673KB
Low	Properly size images	Potential savings of 121KB
Low	Ensure text remains visible during webfont load FCP LCP	1 font found
Low	Avoid long main-thread tasks TBT	1 long task found
Low	Reduce unused CSS FCP LCP	Potential savings of 65.3KB
Low	Serve images in next-gen formats	Potential savings of 29.8KB
Low	Reduce initial server response time FCP LCP	Root document took 102ms
N/A	Largest Contentful Paint element LCP	1,130 ms
N/A	Eliminate render-blocking resources FCP LCP	Potential savings of 14ms
N/A	Reduce JavaScript execution time TBT	32ms spent executing JavaScript
N/A	Avoid large layout shifts CLS	3 elements found
N/A	Minimize main-thread work TBT	Main-thread busy for 524ms
N/A	Reduce the impact of third-party code TBT	Total size was 6.92KB
N/A	Avoid serving legacy JavaScript to modern browsers TBT	
N/A	User Timing marks and measures	